

Cp 971.45  
S17s

SALOM. INT. 1918. LOW. P. 111

THE LIBRARY OF THE  
UNIVERSITY OF  
NORTH CAROLINA



THE COLLECTION OF  
NORTH CAROLINIANA  
ENDOWED BY  
JOHN SPRUNT HILL  
CLASS OF 1889

Cp971.45  
S17s

UNIVERSITY OF N.C. AT CHAPEL HILL



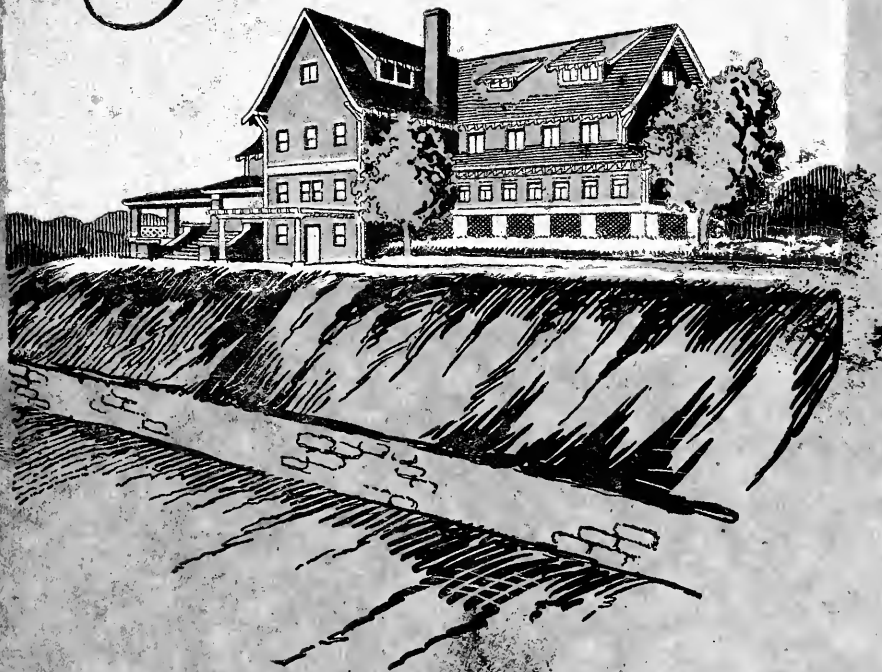
00030719107

FOR USE ONLY IN  
THE NORTH CAROLINA COLLECTION

CP 971.45  
\$175

# SALOLA INN

## SUGAR LOAF MOUNTAIN

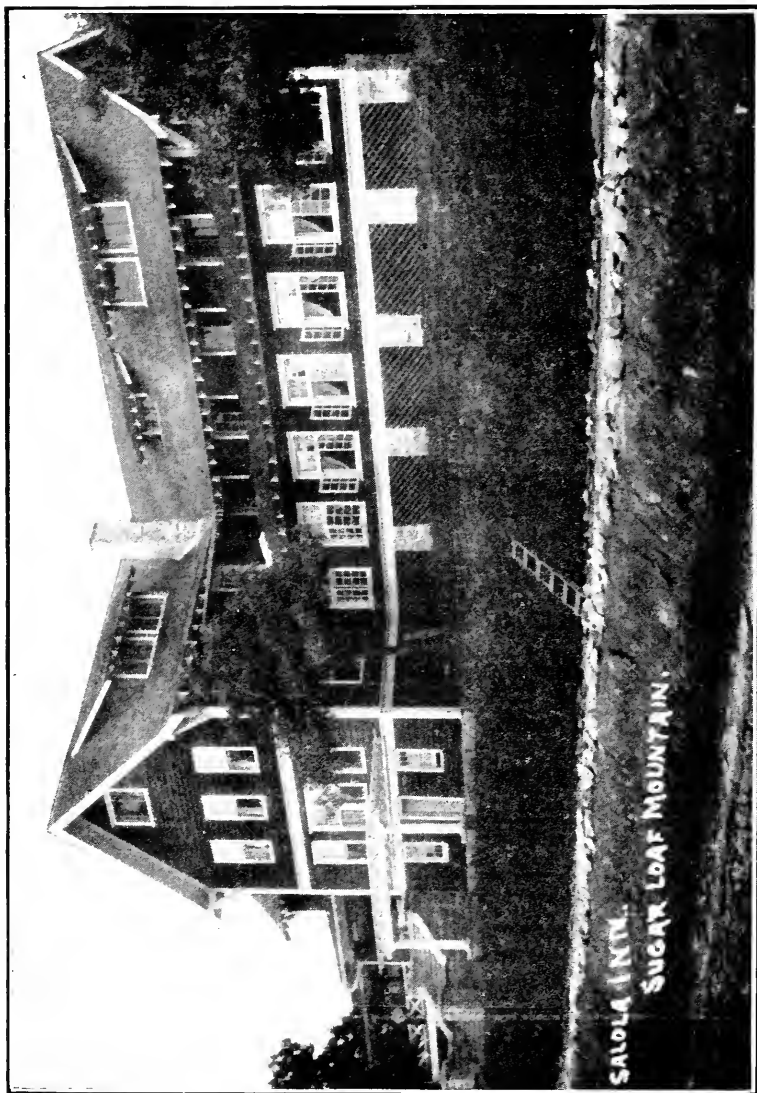


Hendersonville  
North Carolina.



SALOMA INN  
SUGAR LOAF MOUNTAIN  
HENDERSONVILLE, N.C.

For Information  
write  
J. A. HOOKS  
OWNER AND MANAGER  
HENDERSONVILLE, N.C.



SALOLA INTL. SUGAR LOAF MOUNTAIN,

# *Salola Inn*

---

**S**ITUATED on Sugar Loaf Mountain, sixteen miles east of Hendersonville, at an elevation of about 4,000 feet, has been thoroughly redecorated and refurnished throughout, and is now prepared to give efficient service and comfort to those contemplating a sojourn in this delightful section of "The Land of the Sky."

A splendid automobile road from Hendersonville to the hotel has been completed and is a most interesting drive, affording many beautiful views along the way.

A sanitary dairy provides the best of milk, butter, etc, while vegetables are gathered from the Inn's own gardens.

Tennis Courts, Croquet and all outdoor amusements are provided, while a Golf Course will be constructed in the near future.

A high-class Bus Line is operated daily, between the Inn and Hendersonville, thus affording reasonable transportation, and constant mail service.

The Inn is electrically lighted, and supplied with running water.

Open from June 1st to October 31st.

[ PHOTOS BY  
BAKER'S ART GALLERY  
HENDERSONVILLE, N.C. ]

pp. 1466  
Hendersonville



**O**CEAN VIEW. This view is obtained from the front of the Inn, and there are few outlooks so extensive. It must be seen to be appreciated. Many mornings you can see the clouds below covering the valley and distance so you can well imagine you are looking over the ocean.

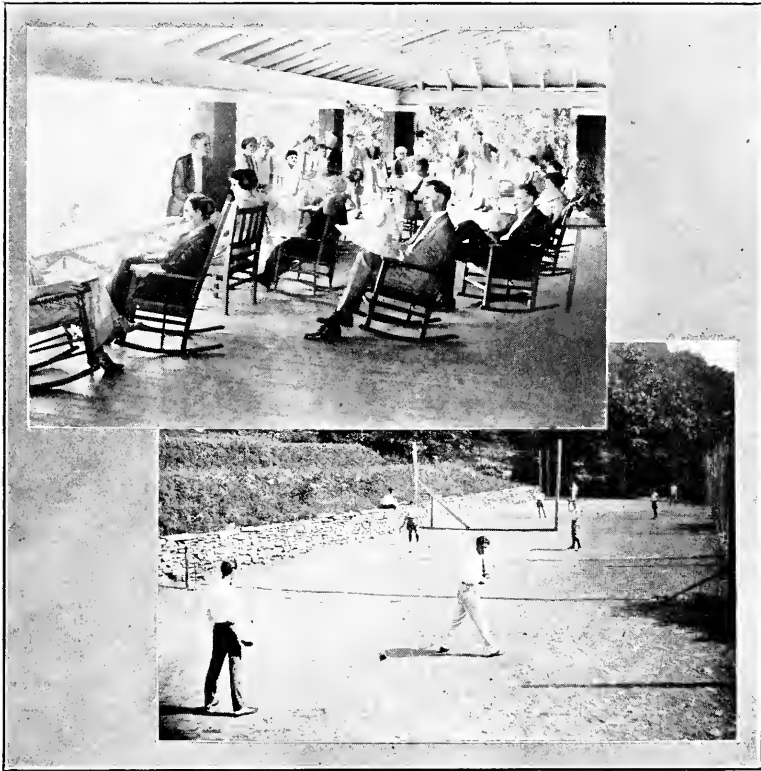




**U**PON THE SUMMIT PLATEAU, one-half mile from the observation tower, is Salola Inn. The automobile highway winds through the grounds and affords easy access at all times.



**B**EING 2000 FEET ABOVE THE SURROUNDING VALLEYS AND MOUNTAIN FORESTS, the view from Salola Inn extends to the horizon. This unexcelled panorama of land and sky is ever changing in colorful hues from sunrise to sunset. The camera cannot record these expansive views as the eyes can see them.



**S**PACIOUS PORCHES, SHADY LAWNS, AND EXCELLENT ATHLETIC COURTS offer guests of Salola Inn a congenial environment for rest and recreation.



**M**R. AND MRS. JOHN AUGUSTUS HOOKS cordially receive their many friends who visit Sugar Loaf Mountain and its many famous points of national tourist attraction. Afternoon receptions at Salola Inn bring together friends and guests from all parts of the South and North.



**A** MID THE PRE-EMINENCE OF ENORMOUS  
ROCK FORMATIONS LIE THE MOST  
FERTILE OF GARDENS producing vege-  
tables and fruits of superior quality to the products  
of the lowlands. Salola Inn is truly a country home  
of the highest type. Its cuisine is characteristic of its  
home-grown products.

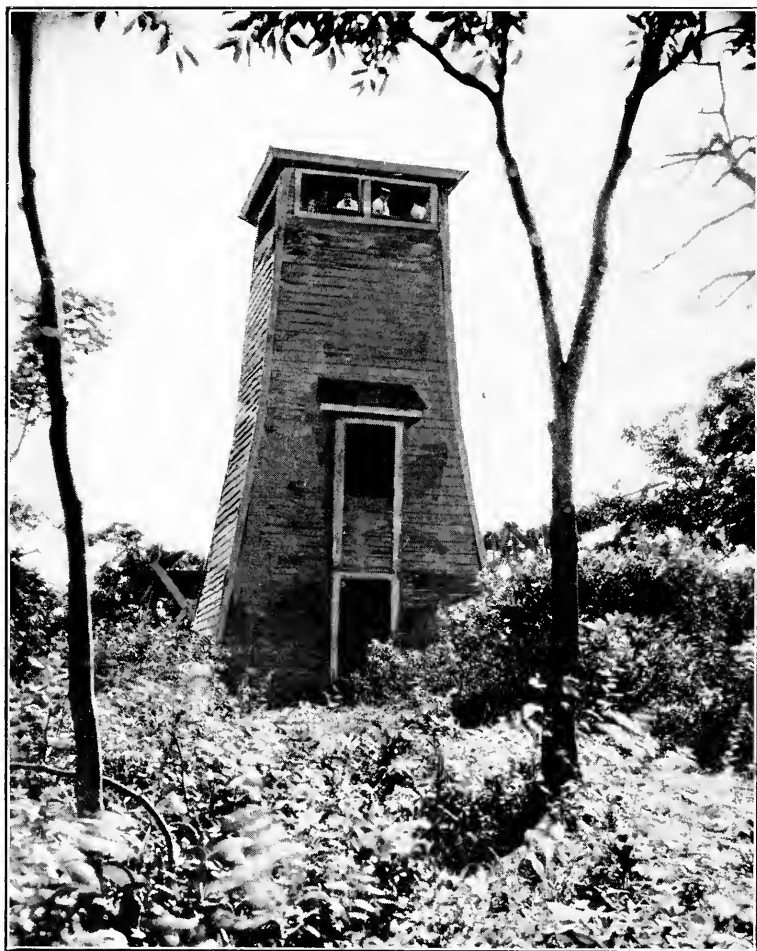


**C**OMFORT--RATHER THAN LUXURY. RE-  
FINEMENT--MORE THAN ELEGANCE--is  
the appeal of Salola Inn to those who seek a  
resort distinctive for the summer vacation.

Nature has provided this life-giving atmosphere.  
Rest, sleep and relaxation come naturally to the tired  
mind and body after each day spent on Sugar Loaf  
Mountain.

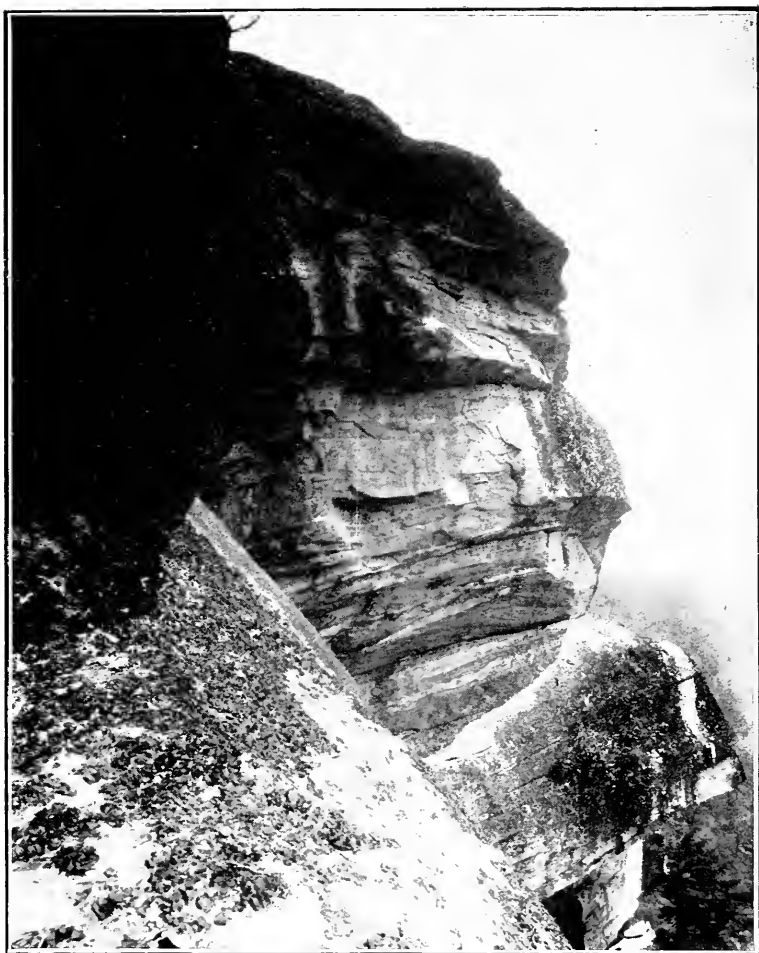


**S**ERVICE is the keynote of satisfied guests at Salola Inn. No expense is spared to make this the summer resort premier in every respect.

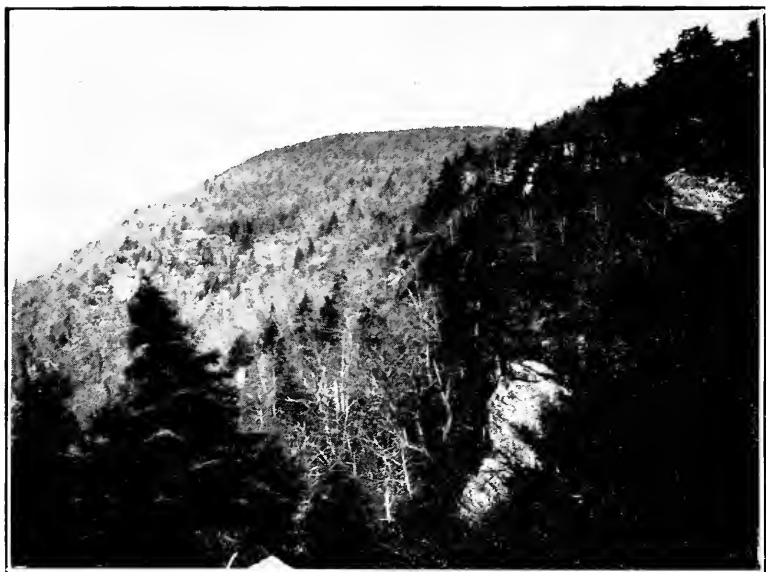


**O**BSERVATION TOWER--commanding a view of from 20 to 40 miles in every direction.



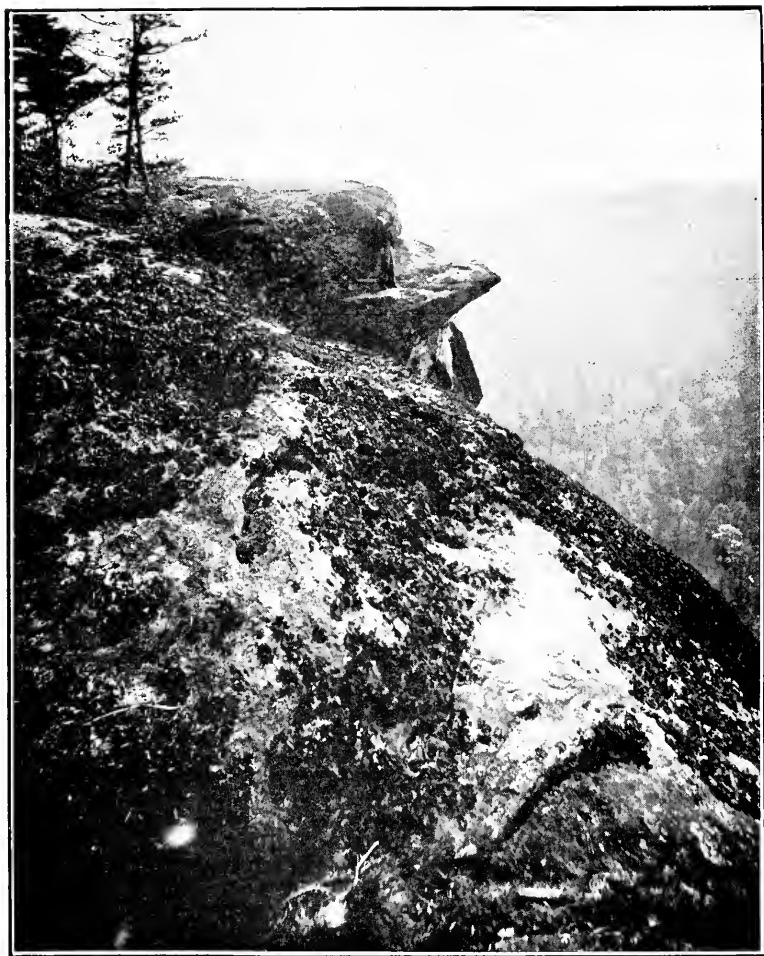


**S**QUIRREL ROCK. A fine piece of Mountain Granite among so many Massive Rocks, for which this whole mountain is noted. Each point is of interest and within easy walking distance of the Inn.



**S**UMMIT OF SUGAR LOAF MOUNTAIN FROM CASTLE ROCK. A climb to this point will be well worth the effort. From here you may overlook the vast expanse of valley and mountain ranges, piled one behind another, till the distant ones are lost to view, being beyond the range of human vision.

A 35-foot tower is to be erected on its highest point, and will command a magnificent view of the country in every direction.



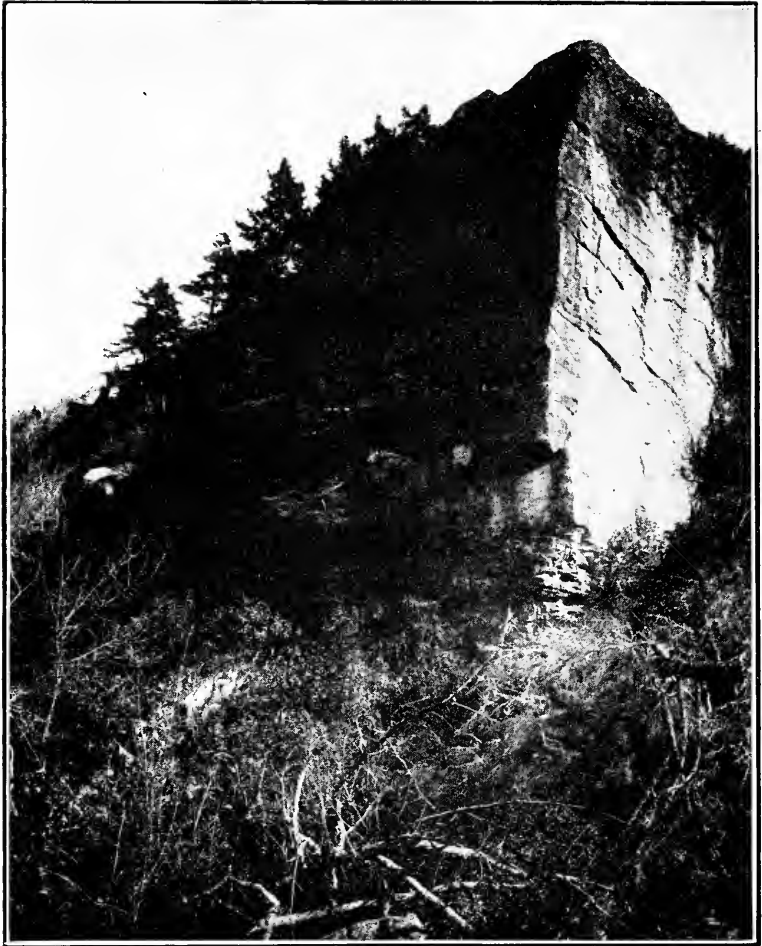
**C**LOVEN CLIFF. To sit on this ledge, on a warm afternoon, with a book "or its equivalent" and drink in the life-giving breeze, which constantly brings new life and health, is the acme of good luck.



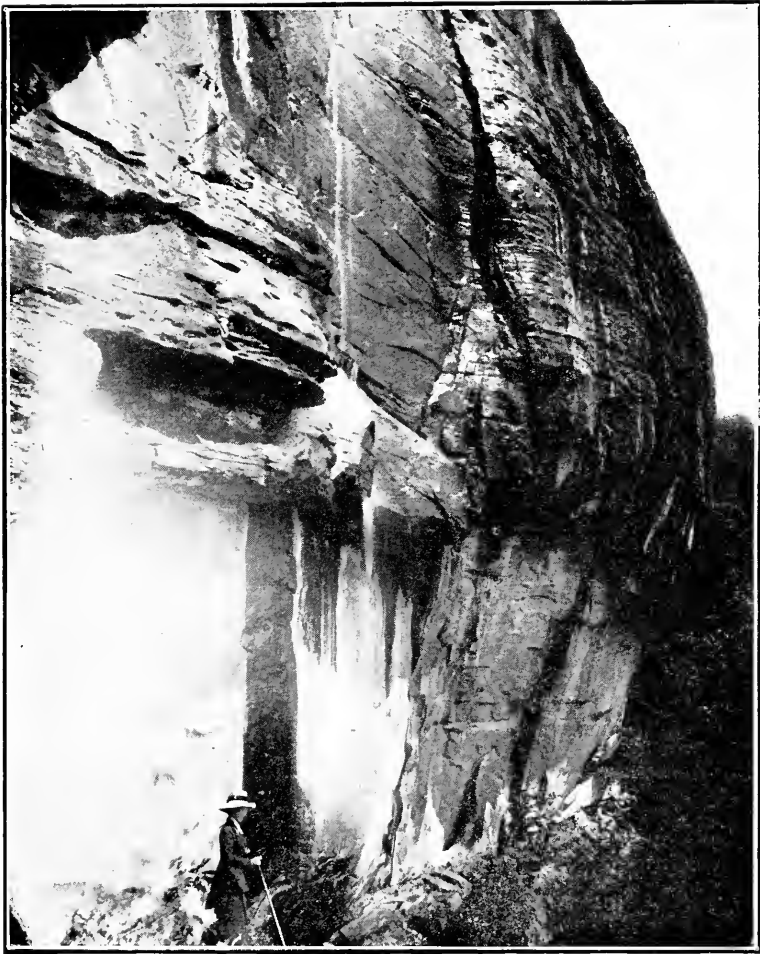
**V**IEW FROM SUNSET ROCK. A wonderful place from which to watch the sun set; the whole western sky often being a galaxy of gorgeous coloring, seldom seen in any other locality.



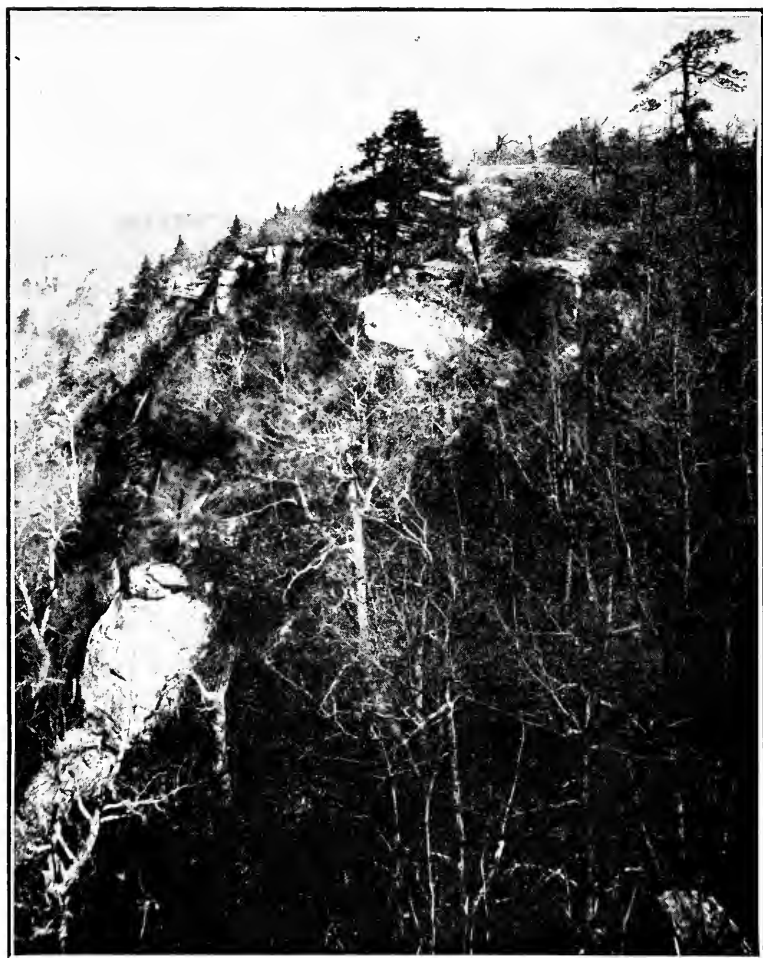
**W**ITHIN EASY ACCESS of Salola Inn, are many other enchanting views—in fact, there seems an almost endless number of interesting places about Sugar Loaf Mountain.



**C**ASTLE ROCK. A piece of Nature's handiwork,  
built to stand the ages.



**S**ALOLA BLUFF. A mighty atom in this inspiring locality, where one can only look and wonder.

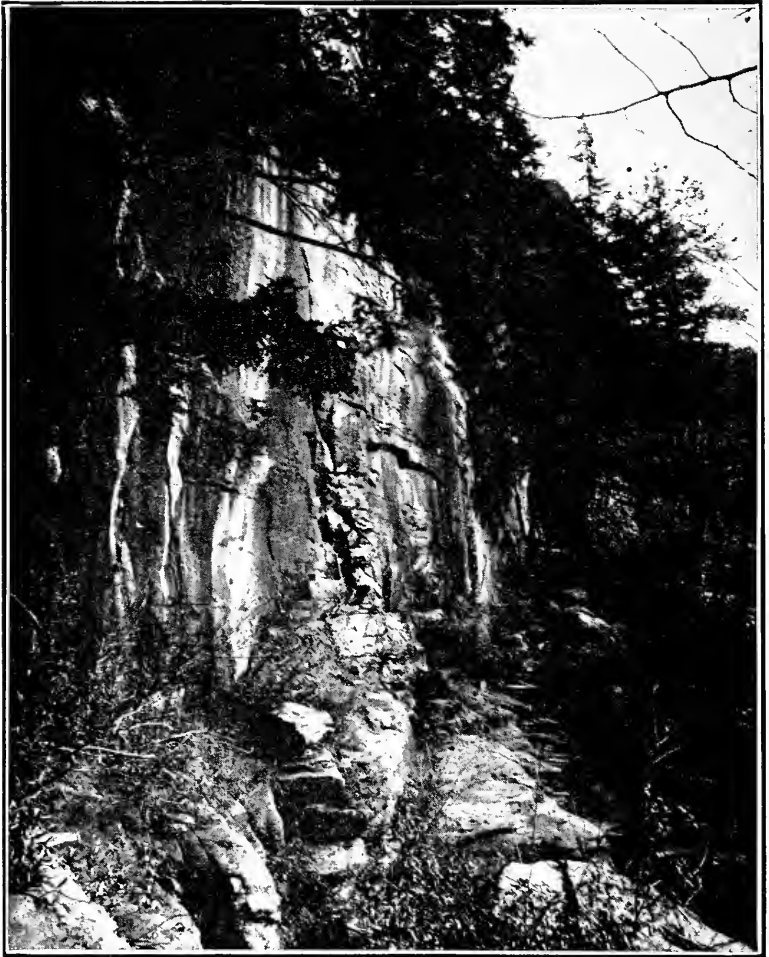


**W**EST VIEW from Sunset Cliff, looking towards Asheville, showing Bear Wallow, Mt. Mitchell and the Pisgah Range.

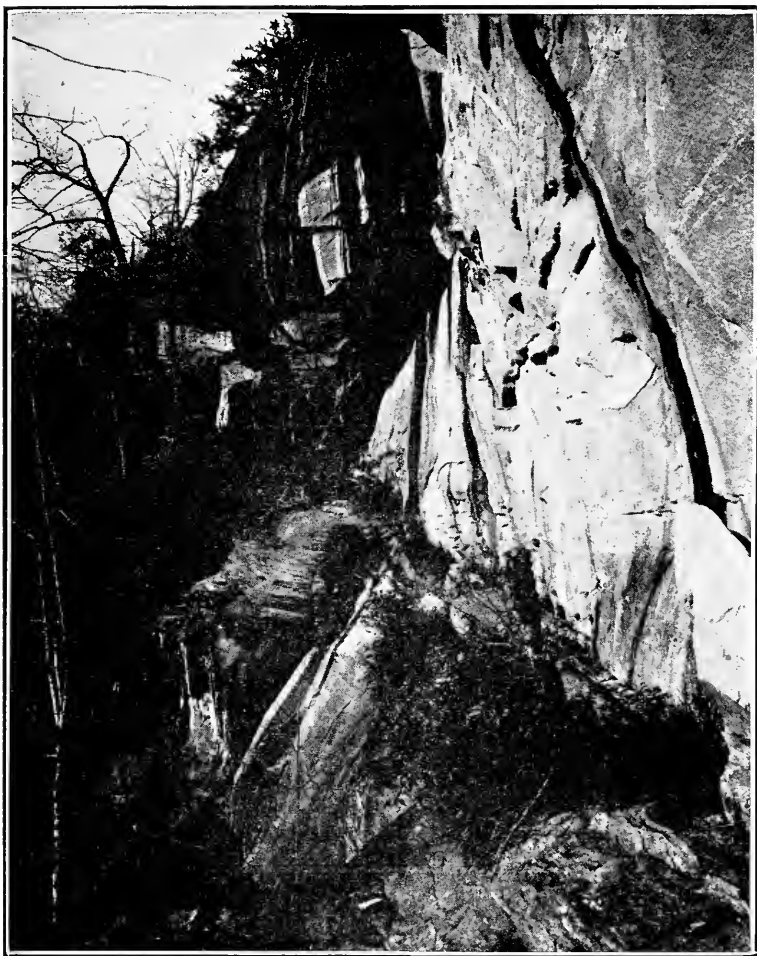




**T**HE PINNACLES. A rough and tumble spot to ramble through and to enjoy.



“**T**HE WINDOWS,” near Bear Pen Cliff, a peculiar formation giving the impression of windows in a house.



**B**EAR PEN CLIFF. From the top of this you overlook the whole of Hickory Nut Gap.



**S**HIP ROCK. Another sample of nature's freaks, and interesting as all things in these mountains are when untouched by the hand of man.

After a trip through this wild and rugged scenery and gazing at these massive cliffs, one is impressed by the stupendous forces embodied in these rocks, and the smallness of each human atom, so well expressed in the following lines:

“Infidel, who in thy finite wisdom  
Woulds't grasp things infinite and dost become  
A scoffer of God's holiest mysteries,  
Tremble, Tremble and Rejoice;  
Tremble, for He who formed this mighty mass  
Could in his judgment, crush thee where thou art  
Rejoice! that still His mercy spares thee.”

